



220 South 33rd Street
123 Towne Building
Philadelphia, PA 19104-6391
215-898-6487
seas.upenn.edu/awe

ADVANCING WOMEN
in ENGINEERING



Building
Inspiring Connections
Collaboration
Developing
Leadership



ADVANCING WOMEN IN ENGINEERING





It is an exciting time for Penn Engineering! Engineers are innovators and problem solvers. We design products and tools that improve people's lives. We communicate, negotiate, and are always learning new things as we work with people across a variety of fields. There are excellent opportunities for research experiences, summer internships, and jobs upon graduation.

As women, we have a crucial role to play in the future of engineering and the impact that the field has in making the world a better place. The goal of Advancing Women in Engineering (AWE) is to enable women to fulfill that role by creating a sense of community, and providing resources, support and opportunities.

Dr. Susan Davidson
Weiss Professor, Computer and Information Science
Chair, Advancing Women in Engineering



A Sense of Belonging

For women who are interested in engineering, there is a particular excitement in being surrounded by like-minded individuals. Such is the environment created at the University of Pennsylvania through the Advancing Women in Engineering (AWE) program. Here, we will nurture your talents and challenge you to reach your true potential. We are committed to enabling your success both here and in your future endeavors.



“Being a part of the community of women engineers at Penn has meant the opportunity to draw on the experiences of the women in classes ahead of me, form incredible friendships, and share my passion for what I do with younger students. I can’t imagine my college experience without AWE.”

***Katherine Miller
Computer Science***

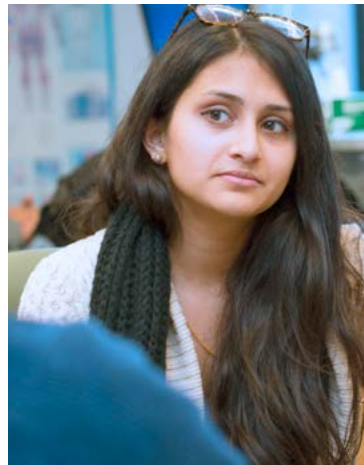
An Exceptional Opportunity

Advancing Women in Engineering

A closer look quickly reveals that AWE is truly unique. This program unites women in a common pursuit of excellence. Penn Engineering stands out amongst its peers, with 33 percent women undergraduates, compared to 20 percent nationally. AWE provides one-of-a-kind opportunities, including outreach activities with local middle and high school students, social and networking events, and a freshman pre-orientation program for women engineers where incoming students meet one another and connect with current students and faculty.

Why Choose Penn Engineering?

Two key elements distinguish a Penn Engineering experience: exceptional academic programs, and practical design and research experience. Here, you will be an active participant in meaningful scientific collaborations. We are a magnet for research partnerships across academic disciplines through top-ranked programs in medicine, business, basic science, communications, law, veterinary science, dentistry and nursing. A Penn Engineering degree gives you a competitive advantage whether seeking a job or pursuing graduate studies.



Breadth, Depth and Excellence

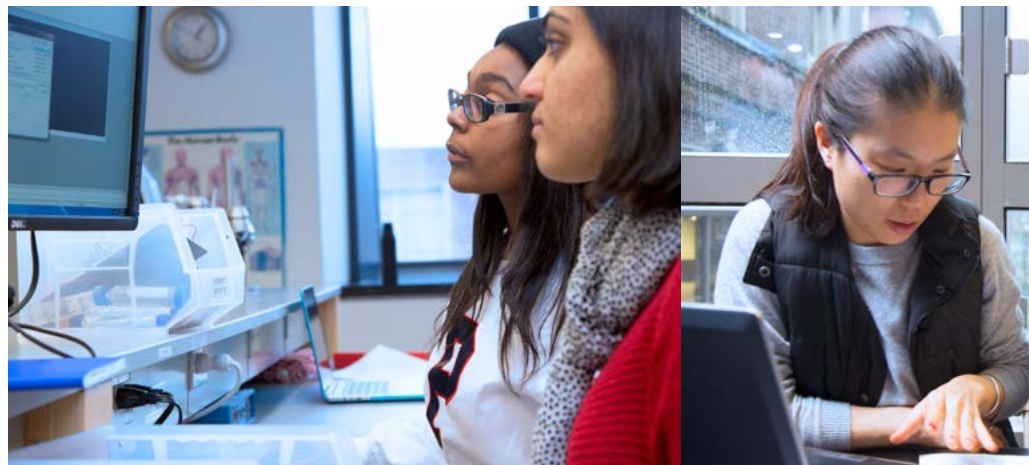
Our renowned faculty is keenly focused on undergraduate education. With an emphasis on both theory and practice, they guide undergraduates in lectures and small seminars, and offer students laboratory-based courses and research opportunities, all of which link scientific concepts to real-world impact. This overview gives you a closer look at Penn Engineering's six departments so you can begin to determine what best suits your interests.

Bioengineering

Consistently ranked in the top 10 undergraduate bioengineering programs in the country, the Department of Bioengineering offers students a wide variety of opportunities including working in world-class research laboratories, gaining unique global service experience, and designing affordable medical diagnostics.

Chemical and Biomolecular Engineering

Students prepare to work on diverse challenges, from creating cleaner sources of energy to improving human health through pharmaceuticals and medical technologies. Courses and seminars integrate theory, problem-solving techniques and experimental work.



Computer and Information Science

Computer science and technology are everywhere – in medicine, business, and just about every field of intellectual inquiry. Students at Penn learn the foundations of the science, today's cutting edge technology, and the skills needed to pick up future technologies with ease. They are well-prepared for a dizzying variety of careers.

Electrical and Systems Engineering

From nanotechnology to implantable medical devices, from robotics to the Internet of Things, from societal-scale systems to network science, and from data science to decision science, you will become engineering leaders of the future.

Materials Science and Engineering

After establishing a sound foundation in materials of all types, students are able to concentrate on specific areas of interest, such as nanoscale materials, energy and soft materials. With an emphasis on “hands-on” experience, many students work in a research group and conduct independent study.

Mechanical Engineering and Applied Mechanics

Students experience hands-on, practical lab work and simultaneously acquire a strong background in theory and computer modeling. Interactive, design-centered assignments, analysis, and projects prepare students for the broad set of problems they will solve in industry and research.

“At the start of freshman year, I participated in the AWE pre-orientation program. The program is a great way to familiarize yourself with Penn’s campus, hear advice from upperclassmen, and get to know your fellow female engineers before college starts.”

*Michelle Chan
Systems Engineering*

AWE Transforms Your Life

AWE is committed to doing our part to recruit and promote women in Penn Engineering. We offer the support, resources and opportunities that make your experience here exceptional and life-changing. We encourage you to find out more. Visit us at seas.upenn.edu/awe. There you will get a more complete picture of what makes us unique, as well as find links to many relevant resources, including:

Advancing Women in Engineering Blog

penn-awe.blogspot.com

Twitter: @pennawe

Society of Women Engineers

fling.seas.upenn.edu/~swe/cgi-bin

Mentornet

seas.upenn.edu/awe/ementoring.php

Penn Women in Technology

cis.upenn.edu/departmental/wit

Women in Computer Science

seas.upenn.edu/~wics

Penn Graduate Women in Science and Engineering

dolphin.upenn.edu/pgwise

Grace Hopper Lecture Series

seas.upenn.edu/awe/grace-hopper.php

Penn Women's Biomedical Society

dolphin.upenn.edu/pwbs

CISisters

seas.upenn.edu/~cisters

"As a freshman, AWE was a way for me to meet fellow women in engineering and receive advice and guidance from current students. I have stayed involved with AWE to give back to the community, by planning events and acting as a mentor to incoming women in engineering."

Bethany Davis
Computer Science

Still have questions?

If you'd like to speak with someone or schedule a campus visit, please contact the AWE Director at **215-573-6487** or **awe@seas.upenn.edu**



University of Pennsylvania Nondiscrimination Statement

The University of Pennsylvania values diversity and seeks talented students, faculty and staff from diverse backgrounds. The University of Pennsylvania does not discriminate on the basis of race, color, sex, sexual orientation, gender identity, religion, creed, national or ethnic origin, citizenship status, age, disability, veteran status or any other legally protected class status in the administration of its admissions, financial aid, educational or athletic programs, or other University-administered programs or in its employment practices. Questions or complaints regarding this policy should be directed to the Executive Director of the Office of Affirmative Action and Equal Opportunity Programs, Sansom Place East, 3600 Chestnut Street, Suite 228, Philadelphia, PA 19104-6106; or (215) 898-6993 (Voice).